

## PV\_SpecialtyLamp Data Sheet

### Overview

PhotonVacuum™ technology is an advanced optical illumination technology for LED based illumination. It makes it possible to collect all the light from the LED die and enables the superior beam control and performance in the smallest size.

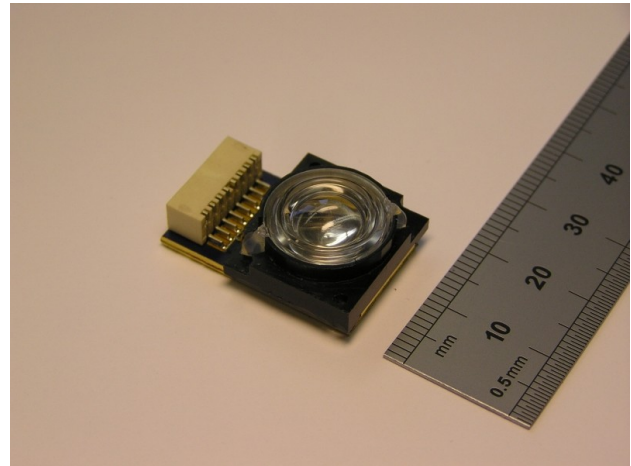
PV\_SpecialtyLamp is an excellent choice for the most demanding spotlight applications. It provides uniform solid beam from the small package, which makes it easy to combine the PV\_SpecialtyLamp with other optics too. PV\_SpecialtyLamp is available with your desired shapes and colors.

### Features

- Available with different beam forms and colors
- Ultra small size
- High collections efficiency
- Uniform light distribution
- Available with the brightest LED chips

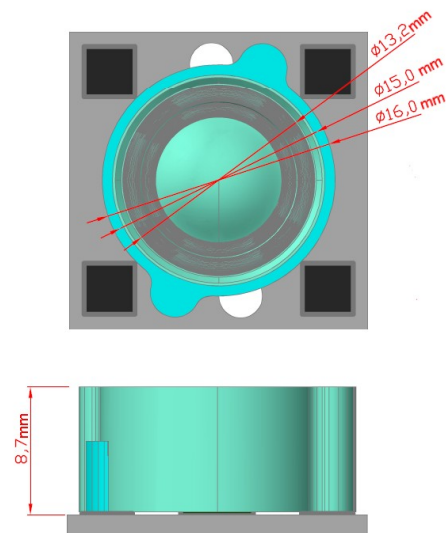
### Applications

- Vehicle front lamps
- Professional head lamps
- Navigation area lamps for boats
- Machine vision illumination
- Optical measurement systems
- Specialty illumination



### Mechanical dimensions

(example drawing, custom designs available from request)



### Contact Information

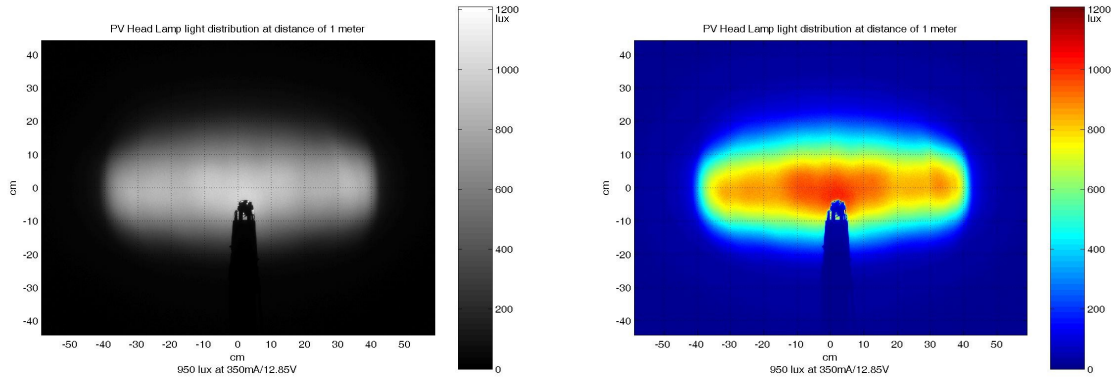
Upstream Engineering Inc.  
Kiilakiventie 1  
FI-90250 Oulu, FINLAND

Tel: +358 40 768 7956  
Fax: +358 8 311 5544  
Email: [sales@upstream.fi](mailto:sales@upstream.fi)  
Web: [www.upstream.fi](http://www.upstream.fi)

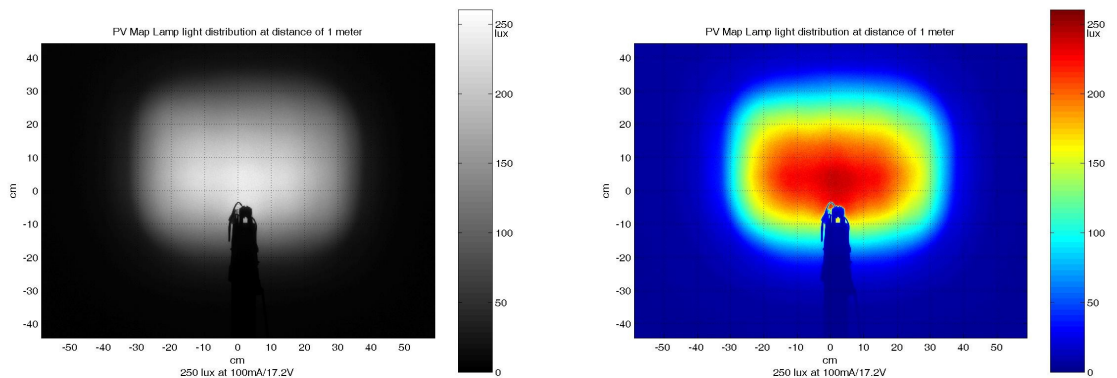
### Important Notice

Performance figures, data and any illustrative material provided in this data sheet are typical and must be specifically confirmed by Upstream before they become applicable to any particular order or contract. In accordance with the Upstream policy of continuous improvement specifications may change without notice. The publication of information in this data sheet does not imply freedom from patent or other protective rights of Upstream or others.

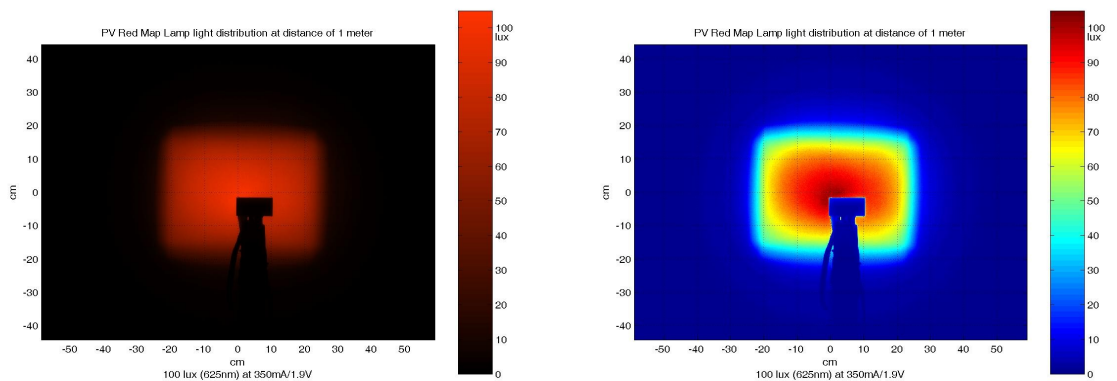
The light distribution at distance of 1 meter with different LEDs options



4 x 1mm<sup>2</sup> White LED chips in row



6 x 1mm<sup>2</sup> White LED chips in 2 by 3 array



One 5.4mm<sup>2</sup> Red LED chip

**Contact Information**  
 Upstream Engineering Inc.  
 Kiilakiventie 1  
 FI-90250 Oulu, FINLAND

Tel: +358 40 768 7956  
 Fax: +358 8 311 5544  
 Email: sales@upstream.fi  
 Web: www.upstream.fi

**Important Notice**  
 Performance figures, data and any illustrative material provided in this data sheet are typical and must be specifically confirmed by Upstream before they become applicable to any particular order or contract. In accordance with the Upstream policy of continuous improvement specifications may change without notice. The publication of information in this data sheet does not imply freedom from patent or other protective rights of Upstream or others.